

PACKING LIST [JK MODEL]

- (2) STRUT 'A'
- (2) STRUT 'B'
- (2) STRUT 'E'
- (2) STRUT 'F'
- (4) SOUTHCO CONSTANT TORQUE ZINC HINGES
- (16) 3/8" SS BUTTON HEAD HINGE SCREWS
- (2) SS COTTER PINS (LOCKING PINS)

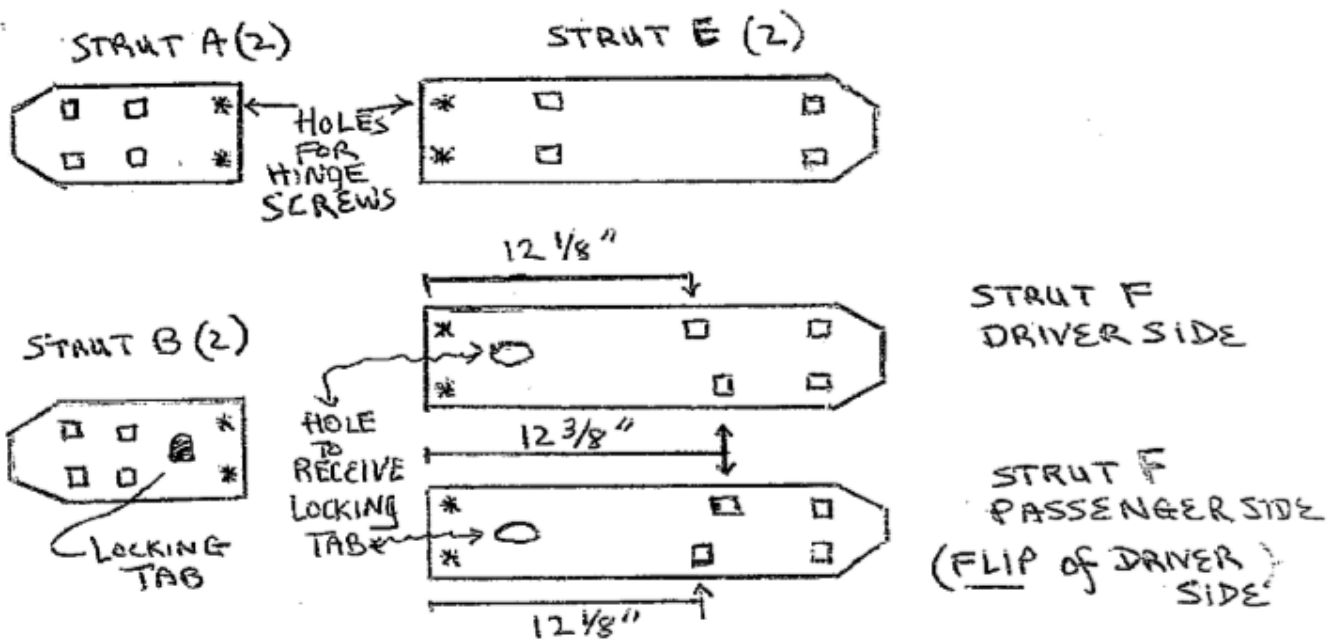
HARDWARE FOR SHORT STRUTS:

- (16) 5/8" SS CARRIAGE BOLTS
- (16) 1/4" SS WASHERS
- (16) LOW PROFILE ZINC LOCKNUTS

HARDWARE FOR LONG STRUTS:

- (7) 3/4" SS CARRIAGE BOLTS
- (9) 5/8" SS CARRIAGE BOLTS
- (16) 1/4" SS WASHERS
- (16) LOW PROFILE ZINC LOCKNUTS

- (4) NEOPRENE RUBBER LANDING PADS
- (1) COMPLIMENTARY WOODEN SILICONE CLEAN UP STICK
- (1) COMPLIMENTARY LOCTITE WATERPROOF SILICONE (2.70 OZ)
- (1) COMPLIMENTARY LOCTITE (BLUE 242) REMOVABLE THREADLOCKER (6 ML)
- (1) COMPLIMENTARY LOCTITE ULTRA GEL SUPER GLUE (4 GRAM)



INSTALLATION OF THE EZUFT SYSTEM JK-MODEL

*PLEASE READ INSTALLATION INSTRUCTIONS COMPLETELY BEFORE STARTING

* **THE SOUND BAR MUST BE TEMPORARILY REMOVED PRIOR TO INSTALLATION.** TO DO SO REMOVE THE 6 BOLTS (SUPPORT WHILE DOING), AND UNPLUG THE ELECTRICAL CONNECTION FROM THE PASSENGER SIDE, THEN REMOVE GENTLY.

* **AT TIME OF INSTALLATION FREEDOM PANELS SHOULD BE CLOSED AND LOCKED FIRMLY IN PLACE.** (MAKE SURE YOU HAVE PROPER ALIGNMENT FOR THE USUAL WATERTIGHT FIT)

WHAT YOU WILL NEED FOR INSTALLATION:

MASKING TAPE (3")	A LONG STRAIGHT EDGE (YARDSTICK)
1/8 TH ALLEN WRENCH	7/16 TH WRENCH
DRILL	1/4 " DRILL BIT
3 COMPLIMENTARY LOCKTITE PRODUCTS: (242) REMOVEABLE THREADLOCKER, WATERPROOF SILICONE SEALANT, SUPER GEL ADHESIVE GLUE.	

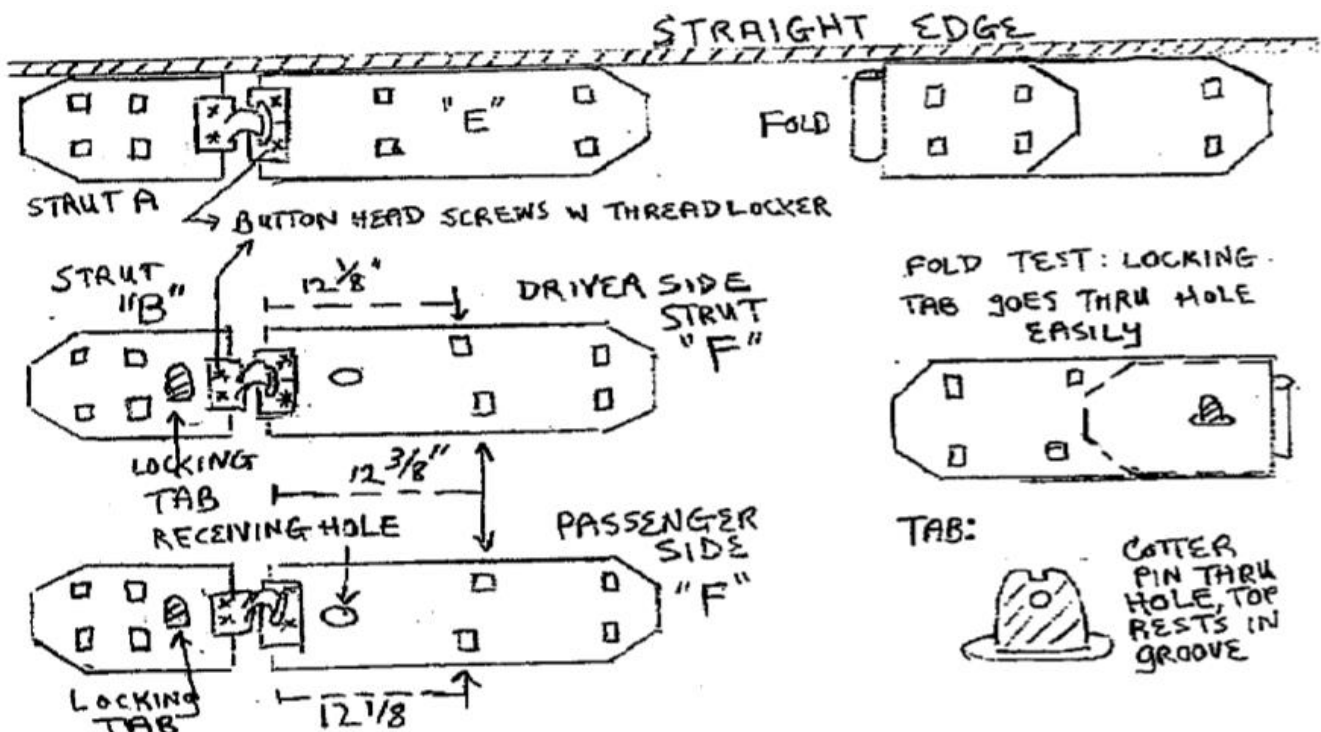
STEP ONE:

CONNECT THE 10" AND 20.5" STRUTS USING THE SOUTHCO 'SYMMETRIC CONSTANT TORQUE HINGES' ALONG WITH THE 3/8" BUTTON HEAD SCREWS. **FOR ASTHETICS MAKE SURE THE HINGES ARE ORIENTED IN THE SAME DIRECTION.** (THE 10" STRUTS WILL BE INSTALLED ON THE MAIN BODY OF THEROOF AND THE LONGER STRUTS WILL ATTACH TO THE FREEDOM PANELS).

JOIN STRUTS A AND E (X2), AND LOCKING STRUTS B AND F (X2) ****MAKE SURE TO FLIP THE F STRUT SO THAT THE DRIVER SIDE AND PASSENGER SIDE ARE MIRROR IMAGES. (SEE FIG A)**

CONNECTING YOUR STRUTS: LAY STRUTS ALONG YOUR STRAIGHT EDGE, PUT A DROP OF 242 REMOVEABLE THREADLOCKER ON EACH 3/8" BUTTON HEAD HINGE SCREW **AND USE TO SECURE THE HINGES TO THE STRUTS BUT DO NOT TIGHTEN COMPLETELY.** FOLD THE STRUTS OVER THEMSELVES AT HINGE AND CONFIRM ALIGNMENT IS MAINTAINED USING STRAIGHT EDGE. ADJUST AS NEEDED AND THEN COMPLETE TIGHTENING OF HINGE SCREWS BEFORE THREADLOCKER DRIES. **MAKE SURE WHEN HINGE IS ATTACHED THAT HOLE IN STRUT F EASILY RECEIVES LOCKING TAB FROM STRUT B**

FIGURE A:



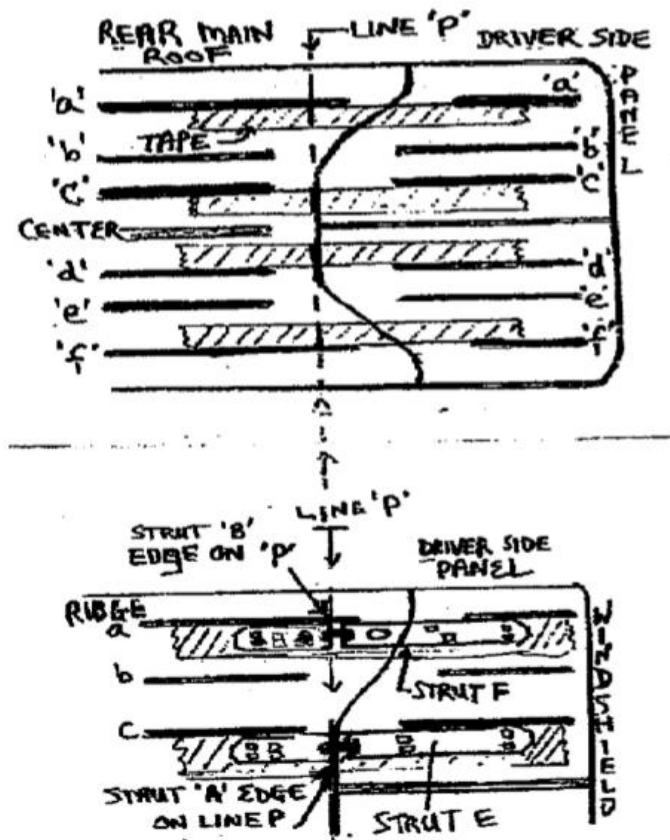
INSTALLING ASSEMBLED STRUTS JK-MODEL

MAKE SURE JEEP ROOF IS IN CLOSED AND LOCKED POSITION, AND THAT SOUND BAR HAS BEEN TEMPORARILY REMOVED.

REFER TO FIGURE B

- (1) LOCATE THE **OUTER MOST MOLDED RIDGES** ON THE 'DRIVER SIDE' AND 'PASSENGER SIDE' OF VEHICLE, (**RIDGES 'a' AND 'f'**). RUN A STRIP OF WIDE MASKING TAPE ABUTTING AND ADJACENT TO THE INSIDE EDGE OF BOTH THESE RIDGES (APPROX 1.5 FEET ON MAIN BODY RUNNING ACROSS TO PANELS FOR ABOUT 2.5 FEET).
- (2) NEXT: LOCATE THE **INNER MOST MOLDED RIDGE** ON THE 'DRIVER SIDE' AND 'PASSENGER SIDE' OF THE FREEDOM PANELS AND THEIR CORRESPONDING RIDGES ON THE MAIN ROOF BODY (**RIDGES 'c' AND 'd'**). RUN A STRIP OF MASKING TAPE ABUTTING AND ADJACENT TO THE INSIDE EDGE OF BOTH THESE RIDGES, AGAIN RUNNING FROM REAR ROOF ACROSS TO FREEDOM PANELS.
- (3) NOW USE A **YARDSTICK** TO CREATE A **PERPENDICULAR LINE** (THAT CROSSES THE TAPE) ABUTTING THE CENTER STRAIGHT EDGE OF THE REAR ROOF (WHERE THE BACK MIDDLE OF THE FREEDOM PANELS JOIN THE MAIN ROOF). **THIS WILL BE LINE 'P'**. USING A PENCIL MARK FULLY WHERE LINE 'P' CROSSES THE MASKING TAPE. WHEN THE APPROPRIATE STRUT-HING COMBINATIONS ARE POSITIONED ON THE TAPE THE (HINGE SIDE) EDGE OF THE SHORT STRUT MUST LIE ON LINE 'P'.

FIGURE B:

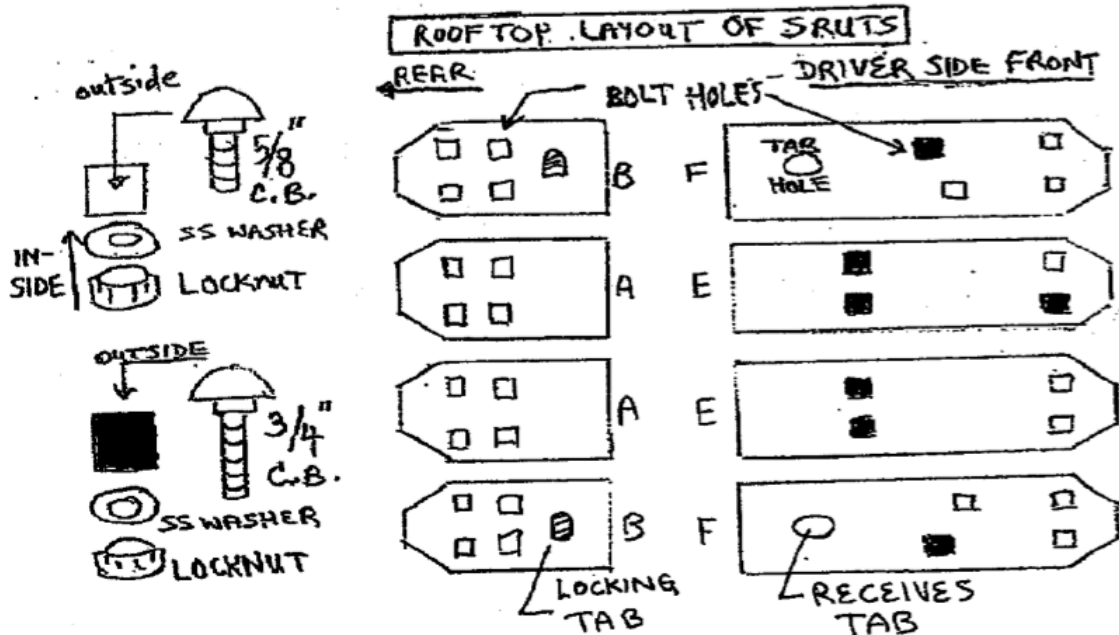


- (4) STRUT & HINGE COMBINATION 'A & E' (2 SETS) ARE PLACED OVER TAPE OF RIDGES 'c & d'. THE (HINGE SIDE) EDGE OF STRUT 'A' LIES ON LINE 'P'.
- (5) THE 'DRIVERS SIDE' STRUT & HINGE COMBO 'B & F' SITS OVER THE TAPE OF RIDGE 'a' AND THE (HINGE SIDE) EDGE OF 'B' IS ON LINE 'P'. STRUT 'F' RUNS FROM MAIN ROOF ONTO THE FREEDOM PANEL. THE 'PASSENGERS SIDE' 'B & F' STRUT IS THE 'FLIP' OF THE DRIVERS SIDE 'B & F'. IT SITS ON THE TAPE FOR RIDGE 'f'. AGAIN: LINE EDGE OF 'B' ONTO LINE 'P'. FOR BOTH 'F' STRUTS THE OFFSET 12 1/8" BOLT HOLE IS CLOSEST TO THE DOOR.
- *(6) WHEN INSTALLING: DO ONE PANEL AT A TIME. USE MEASURE TO MAKE SURE STRUTS 'E & F' ARE PARALLEL.
- **DO NOT MARK OR DRILL THE HOLE IN STRUT 'F' THAT RECEIVES THE LOCKING TAB FROM STRUT 'B'.
- **SEE NEXT PAGE FOR CORRECT HARDWARE PLACEMENT AND STEP BY STEP INSTALLATION/DRILLING.

HARDWARE FOR JK-MODEL STRUTS

* SQUARE BOLT HOLES ON ALL 10" STRUTS RECEIVE 5/8" CARRIAGE BOLTS FROM ABOVE AND 1/4" SS WASHERS WITH LOWPROFILE LOCKNUTS THREADED FROM THE INSIDE.

** THE LONG STRUTS THAT ATTACH TO THE FREEDOM PANELS RECEIVE 5/8" AND 3/4" CARRIAGE BOLTS FROM ABOVE AND THE 1/4" SS WASHERS AND LOCKNUTS FROM THE INSIDE. THE BOLT HOLES RECEIVING THE LONGER 3/4" CARRIAGE BOLTS ARE SHOWN BELOW (SHADED BOLT-HOLE SQUARES). SEE FIG. C:



RECOMMENDATION:

INSTALL HINGE SYSTEM AND HARDWARE FOR **ONE PANEL AT A TIME**. START WITH THE **STRUT 'A & E'** COMBINATION. (SUBSEQUENT B-F STRUT COMBO MUST BE PARALLEL TO 'A & E' STRUTS THROUGH FULL LENGTH, USE MEASURE OR RIGHT ANGLE TO ENSURE THIS)

DRIVER-SIDE PANEL:

POSITION **STRUT COMBO 'A & E'** **SNUGLY AGAINST RIDGE 'c'** & WITH (HINGE SIDE) EDGE OF STRUT 'A' ON LINE P AND **SRUT 'E' SEATED ON THE FREEDOM PANEL**. USE A PENCIL TO MARK THE INSIDE PERIMETER OF EACH BOLT HOLE THAT YOU WILL BE DRILLING (8 TOTAL). **USE AN AWL** TO MAKE AN INDENT ON THE CENTER OF THESE HOLES. USE A **1/4" DRILL BIT** (SPEED BORE WORKS WELL HERE) KEEPING IT STRAIGHT UP AND DOWN, APPLY LIGHT PRESSURE WHEN DRILLING THE **8 HOLES**. REMOVE THE TAPE AND DRY FIT THE ASSEMBLY IN PLACE WITH ALL **8 BOLTS** TO CONFIRM A SNUG FIT THAT ABUTTS THE LENGTH OF (AND IS PARALLEL TO) **RIDGE 'c'**. REMOVE ASSEMBLY AND CLEAN ROOF TOP FREE OF ANY DUST OR DEBRIS.

APPLY **WATERPROOF SILICONE SEALANT** TO THE UNDERNEATH OF THE STRUTS IN A CONTINUOUS BEAD AROUND THE BOLT HOLES AND PERIMETER BETWEEN HOLES AND STRUT EDGE.

SEE FIGURE D.

PUT ASSEMBLY GENTLY IN POSITION ALIGNING OVER HOLES. **DO NOT PRESS DOWN YET**. CONFIRM CORRECT POSITIONING BY PLACING AT LEAST 2 BOLTS IN SHORT STRUT AND 2 BOLTS IN LONG STRUT. BEFORE FINAL INSTALL OF BOLTS PLACE A BEAD OF SILICONE AROUND SQUARE SHANK OF EACH CARRIAGE BOLT AND PUT INTO DESIGNATED BOLT HOLES.

THREAD AND SECURE 1/4" SS WASHER AND LOW PROFILE LOCKNUT TO CARRIAGE BOLTS FROM INSIDE JEEP USING A 7/16 " WRENCH/SOCKET. **THEN, PRESS ON STRUTS TO SETTLE SILICONE BEAD EVENLY.** NOW PROCEED WITH FINAL TIGHTENING OF LOCKNUTS.

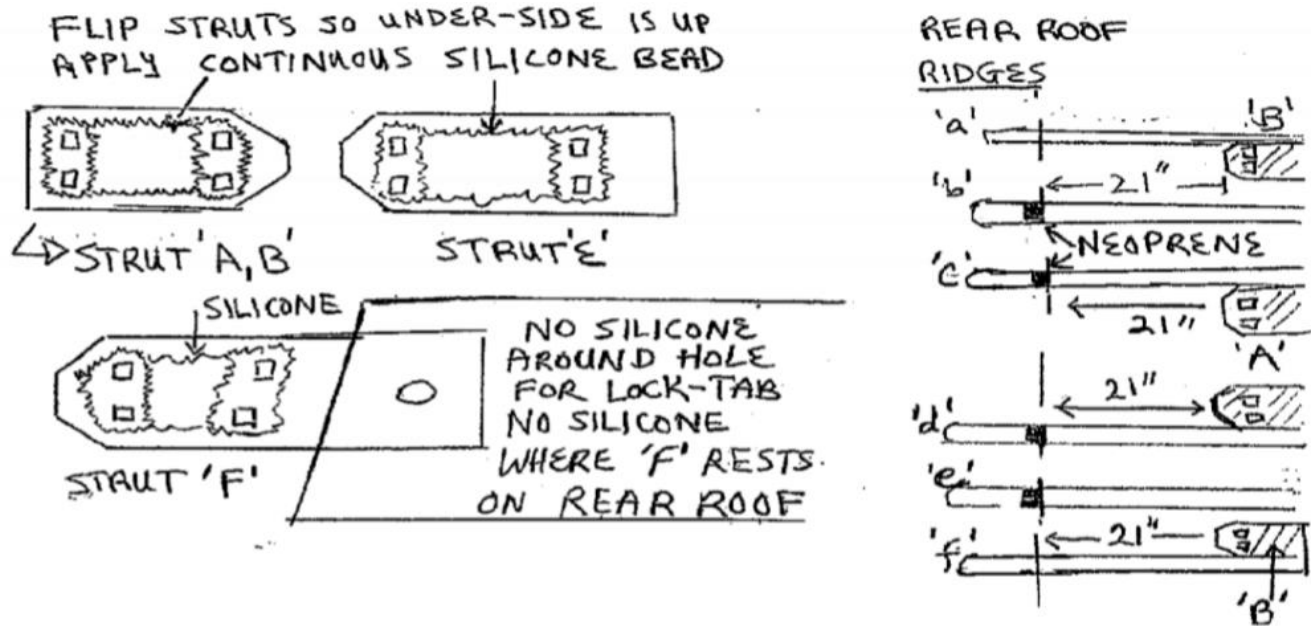
YOU HAVE COMPLETED THE INSTALL OF THE FIRST STRUT SYSTEM. ****REMOVAL OF ANY XS SILICONE WITH THE PROVIDED WOODEN CLEANUP STICK IS EASIER WHEN THE SILICONE BEAD STARTS TO HARDEN SLIGHTLY.**

PROCEED WITH INSTALL OF DRIVER-SIDE STRUT COMBO 'B & F', ** NOTE THAT THE FIRST (12 1/8") OFFSET BOLT HOLE IS CLOSEST TO DOOR!! (HINGE SIDE) EDGE OF STRUT 'B' MUST LINE UP ON LINE P WITH STRUTS SITTING SNUGLY AGAINST **RIDGE 'a'** (& STRUT 'F' EXTENDING ON TO FREEDOM PANEL).

REPEAT INSTALL METHOD AS DESCRIBED, BUT MEASURE TO CONFIRM THAT STRUTS 'A-E' AND 'B-F' ARE PARALLEL THROUGH OUT. DO NOT FORGET TO APPLY **CONTINUOUS BEAD OF WATERPROOF SILICONE (SEE FIGURE D.) DO NOT FORGET TO APPLY SILICONE TO SQUARE SHANK OF EACH CARRIAGE BOLT.**

****DO NOT APPLY SILICONE SEALEANT TO PORTION OF STRUT 'F' THAT RESTS ON MAIN ROOF PANEL.** REPEAT INSTALL PROCESS FOR PASSENGER SIDE FREEDOM PANEL.

FIGURE D



AFTER ALL STRUT/HINGE COMBINATIONS HAVE BEEN INSTALLED **IT IS TIME TO INSTALL THE NEOPRENE LANDING PADS** . THE FREEDOM PANELS REST ON THESE WHEN IN OPEN POSITION . WITH A PENCIL DRAW A LINE PARALLEL TO LINE P, BUT **21 INCHES** TOWARDS THE **REAR** OF THE SHORT STRUTS. MEASURE FROM SHAPED (NON HINGED) END OF STRUTS 'A' & 'B'. MARK THIS LINE **ON TOP OF RIDGES: 'b', 'c', 'd' and 'e'**. **PADS WILL BE GLUED ADJACENT TO BACK EDGE OF EACH MARKED RIDGE PENCIL LINE. NEXT:** WIPE CLEAN AND DRY ROOF RIDGES WHERE MARKED (21 INCHES BACK) . APPLY A BEAD OF **LOCTITE SUPER GEL ADHESIVE TO EACH 'NEOPRENE PAD'**. **PRESS DOWN SECURLY IN PLACE FOR 30-60 SEC.** IF NEEDED APPLY A WEIGHT. LET SET FOR FIVE MINUTES WITHOUT DISTURBING. GLUE CURES IN 24 HOURS.GIVE ALL SEALANTS 24 HOURS BEFORE GETTING WET.

NOW YOU CAN FEEL THE FREEDOM: JUST FLIP (LOCK) & GO